

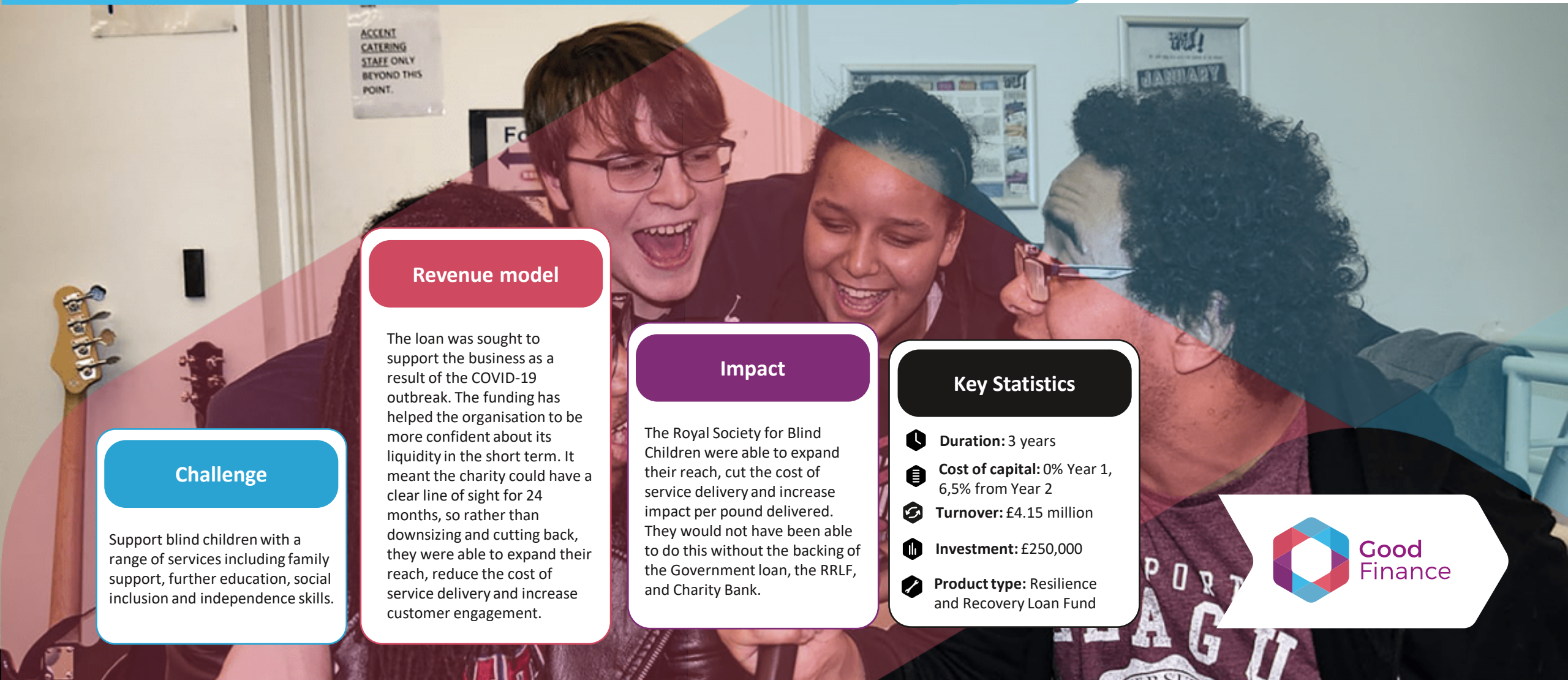


Royal Society for Blind Children (RSBC)

<https://www.rsb.org.uk/>



CBILS



Challenge

Support blind children with a range of services including family support, further education, social inclusion and independence skills.

Revenue model

The loan was sought to support the business as a result of the COVID-19 outbreak. The funding has helped the organisation to be more confident about its liquidity in the short term. It meant the charity could have a clear line of sight for 24 months, so rather than downsizing and cutting back, they were able to expand their reach, reduce the cost of service delivery and increase customer engagement.

Impact

The Royal Society for Blind Children were able to expand their reach, cut the cost of service delivery and increase impact per pound delivered. They would not have been able to do this without the backing of the Government loan, the RRLF, and Charity Bank.

Key Statistics

- Duration:** 3 years
- Cost of capital:** 0% Year 1, 6,5% from Year 2
- Turnover:** £4.15 million
- Investment:** £250,000
- Product type:** Resilience and Recovery Loan Fund

