

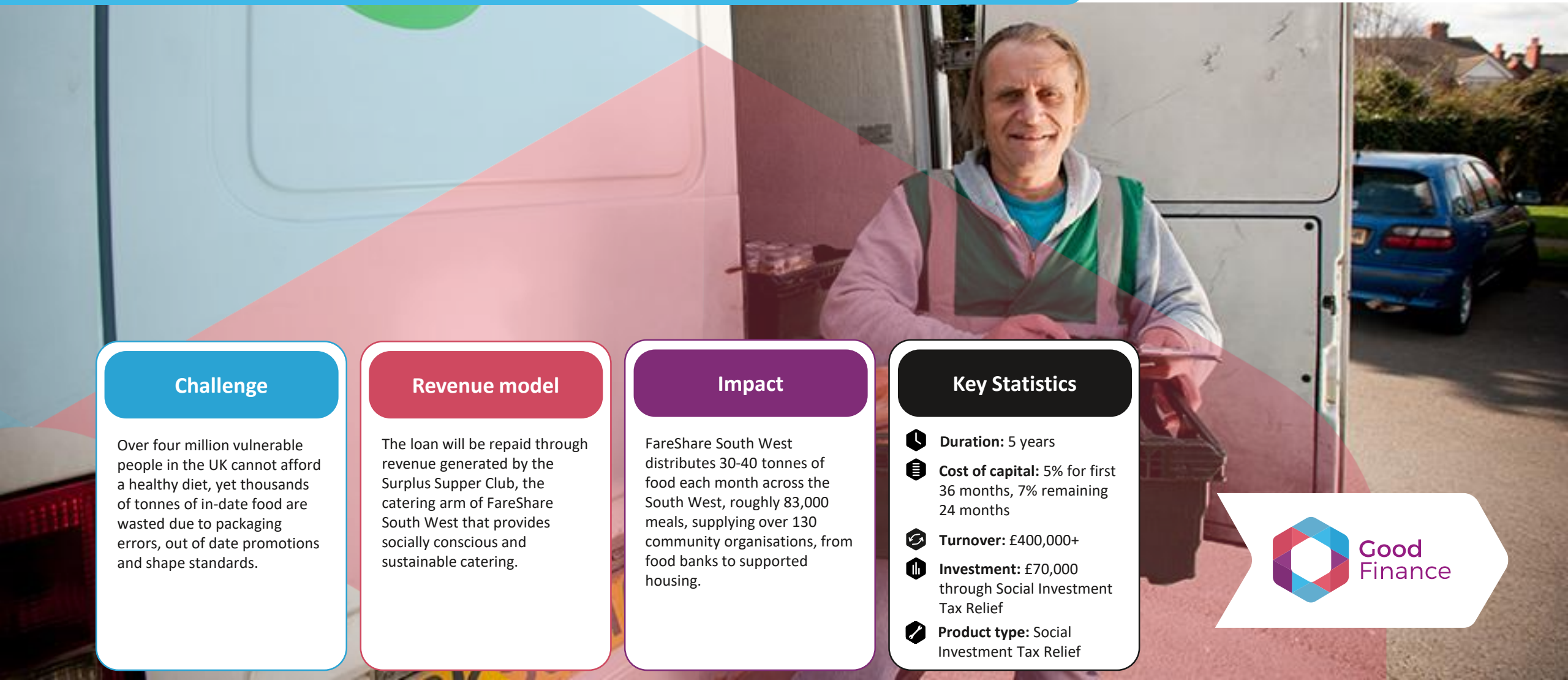


Fareshare South West

www.faresharesouthwest.org.uk



Individual Investors



Challenge

Over four million vulnerable people in the UK cannot afford a healthy diet, yet thousands of tonnes of in-date food are wasted due to packaging errors, out of date promotions and shape standards.



Revenue model

The loan will be repaid through revenue generated by the Surplus Supper Club, the catering arm of FareShare South West that provides socially conscious and sustainable catering.

Impact

FareShare South West distributes 30-40 tonnes of food each month across the South West, roughly 83,000 meals, supplying over 130 community organisations, from food banks to supported housing.

Key Statistics

-  **Duration:** 5 years
-  **Cost of capital:** 5% for first 36 months, 7% remaining 24 months
-  **Turnover:** £400,000+
-  **Investment:** £70,000 through Social Investment Tax Relief
-  **Product type:** Social Investment Tax Relief



Good Finance